



Lintec Window Film Pressure Sensitive Adhesive System Installation Instructions

EQUIPMENT

- MetWest Application solution
(For every 100 sq. ft of film, we ship one 8 oz bottle to mix with 1 gallon water)
- Squeegee
- Edge guide tool
- Trimming knife
- Pressure sensitive tape
- Razor scraper
- Paper towel (a lint free towel is best)

Lintec squeegees are highly recommended for proper installation.

Lintec squeegees are softer and less likely to scratch film than standard squeegees.

A standard 32 ounce spray bottle full of warm distilled water mixed with 3 drops of dishwashing fluid can be used as application fluid in a pinch.

1. COMPLETELY CLEAN WINDOW

- a. Place absorbent cloth on floor under the windows to collect excessive window solution.
- b. Wash window with solution and squeegee.
- c. Wet window with solution and scrape entire surface with Triumph blade to remove any dirt particles.
- d. Wash and squeegee again.
- e. Wipe edges carefully with paper towel.
- f. Make sure that all loose dirt is removed.

Cleaning the window completely and thoroughly is the single most important step.

1. FILM PREPARATION

- a. Take the film out of the box. Remove end plugs and protective plastic sleeve. Save packaging to protect balance of film when job is completed. Replace end plates and place the roll back in the box. Set the box in front of the window so that release liner which protects the adhesive faces installer. The film can then be unrolled directly from the box.
- b. Measure window glass from inside frame.
- c. Film width should be pre-cut wider than window.
- d. Soak window thoroughly with solution.
- e. Have assistant hold cut film, or place film against solution soaked window with release liner facing the installer. The solution on a window will hold film in place (with SR coated polyester film do not use wet window to hold film).

3. RELEASE LINER REMOVER

The films are coated with pressure sensitive adhesive which must be kept clean. The adhesive is protected with a release liner and during application the release liner must be removed. Protect the film and exposed adhesive during the entire installation procedure. Do not let it touch anything but the glass on which it is to be installed.

- a. Apply pressure sensitive tape on one side of an upper corner of the film. Place a second piece of tape on same corner on the reverse side of film (**see diagram A**). Be careful not to let exposed tacky surfaces of the tape touch each other.
- b. Holding one piece of tape in each hand, pull the pieces of tape apart to separate the release liner from film.
- c. As you pull the liner off the film, begin to spray the adhesive surface with solution, completely soaking exposed adhesive. Continue pulling down on clear release sheet while spraying solution on adhesive. Solution will neutralize adhesive, preventing it from sticking to anything. Once initial removal of liner begins, try to pull it down evenly across the film (**see diagram B**). Keep release liner for use as a mask during squeegee process.
- d. With adhesive surface completely exposed, spray one final time with solution to insure that 100 percent of adhesive is wet.

4. FILM APPLICATION

- a. Hold film at uppermost corners being careful not to allow film to touch floor or any other surface, place film on window with adhesive side against glass (**see diagram C**).
- b. The application solution acts as a lubricant making the window surface slippery. You can now slide the film so that one edge of film is 1-2mm from one side of window (**see diagram D**). Lift film if necessary to remove large wrinkles or bubbles. (For ease of installation the edge you select should be the one you favor, i.e. right side for right-handed people, left side for left-handed people. If you fitted correctly this edge will not have to be trimmed. Other edges of the film should overlap top, bottom, and opposite edge of window).
- c. Adjust film to correct elevation.
- d. Spray the surface side of the film facing you with solution. Apply the liner over the piece of film.
- e. Beginning at the center of window, use blue squeegee to remove water: squeegee once to right side of window (**see diagram E**). Going back to the center, squeegee across to left hand edge of the window, then squeegee the window in straight, smooth strokes working from center out to the edges of the window until all excess application solution has been squeegeed out from under the film and film is lying flat. Note: the squeegee will not float across a dry surface, so re-lubricate with application solution as needed.

Please use the release liner as a mask during the squeegee process.

5. FILM TRIMMING

- a. Butt the edge guide tool against the window frame, perpendicular to glass (**see diagram F**).
- b. With trimming knife and new sharp blade, trim excess film using edge guide tool to provide a narrow straight line border. Trim the bottom and side before top, so that trimmed film will not get in your way.
- c. Start trimming operation from corner but do not finish cutting into corner.
- d. Remove and discard all film scraps.

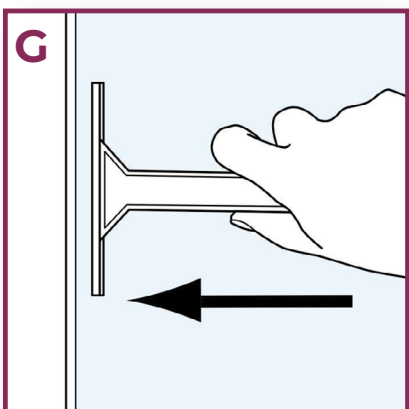
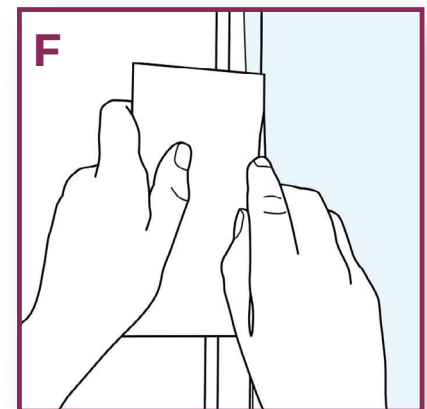
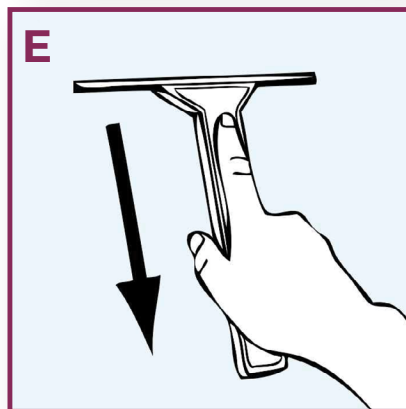
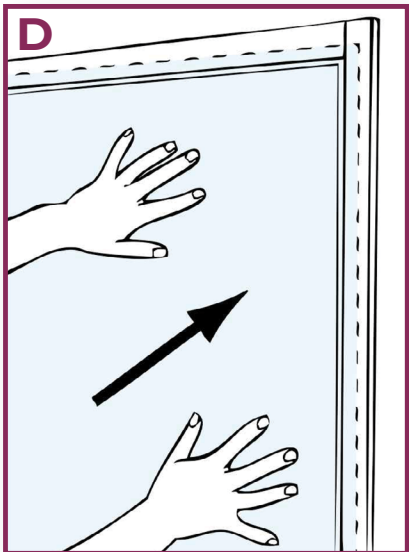
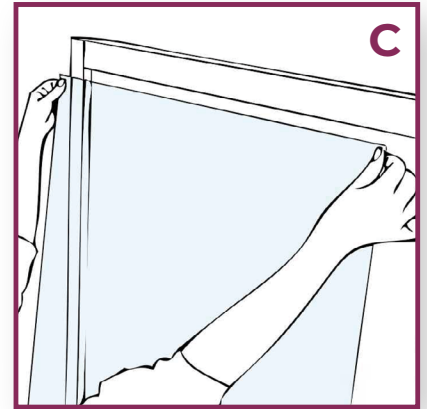
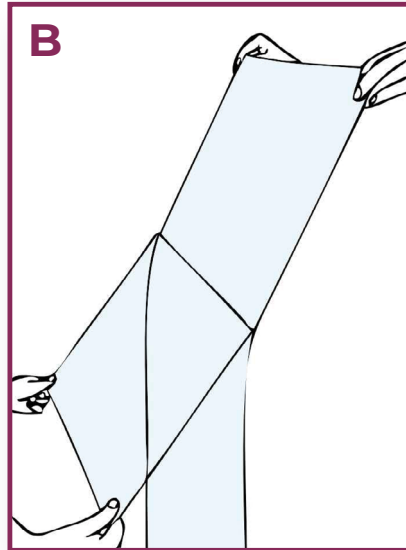
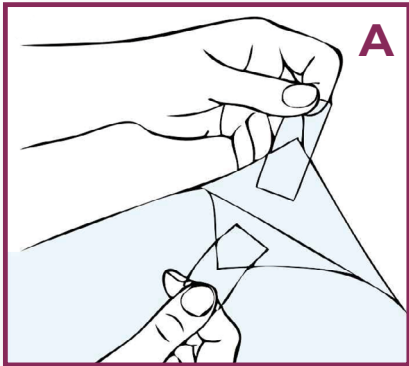
6. FINAL SQUEEGEE

- a. Once film is completely trimmed, spray the surface once more with application solution. Repeat blue squeegee operation with liner as described in Step 4-d (see diagram G). Finally, using a damp microfiber towel, gently wipe around edges of film to completely remove all excess water. This prevents the application solution from re-entering between the glass and film.

Note on WINCOS UV printed films: Many UV curable inks are not entirely water resistant and some added care is necessary. When applying the application solution on the film surface squeegee within 2 minutes. Use the release liner as a mask over film when applying the film to glass to prevent scratching of film and ink.

7. CLEANING & MAINTENANCE

- a. The film can be cleaned periodically using a soap and water solution. We recommend wetting a soft cloth with solution and then cleaning the window rather than directly spraying solution on the surface. Never use harsh chemicals or cleaning agents such as Windex to clean the film surface. The chemicals can attack the film's adhesive causing delamination from the window.



- A.** Apply pressure sensitive tape on one side of an upper corner of the film. Place a second piece of tape on the same corner on the reverse side of film. Holding one piece of tape in each hand, pull pieces of tape apart to separate liner from film.
- B.** Spray adhesive surface with solution and pull liner off film, pulling it down evenly across the film.
- C.** Hold film at upper corners. Place film on glass with adhesive against glass.
- D.** Slide film so one edge is 1-2mm from one window. Apply liner.
- E.** Spray surface side of film with solution. Starting at center of film, squeegee to right, then squeegee again center to left. Continue to squeegee center out until all solution has been squeegeed out.
- F.** Butt edge guide tool against frame and trim all excess film.
- G.** Spray again with solution. Repeat squeegee operation in Step E. Wipe edges of film of excess water.

MANUAL SIGN-OFF

This will acknowledge that I have received and read a copy of the Metropolitan West Installation Guide.

Signature of Installer

Printed Name

Date